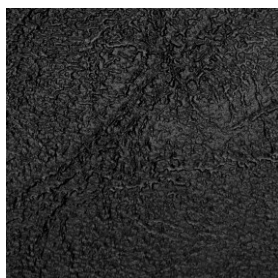
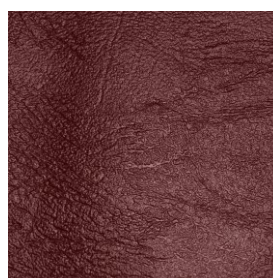


# TEINTES TISSUS

## Les thermo-soudés AGNEAU M1



**Noir  
ANR**



**Bordeaux  
ABO**

## Les thermo-soudés DAIM M2



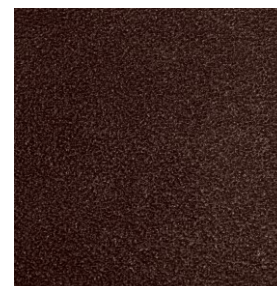
**Gris galet  
DGG**



**Beige  
DBE**



**Lavande  
DLA**



**Café  
DCF**

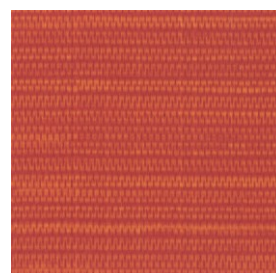
## Les agrafés ABAKA M2



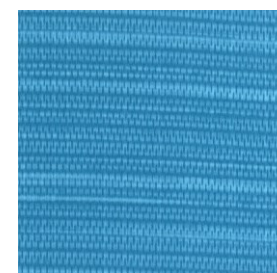
**Kiwi  
AKI**



**Safran  
ASA**



**Piment  
API**



**Curacao  
ACU**



**Grège  
AGR**

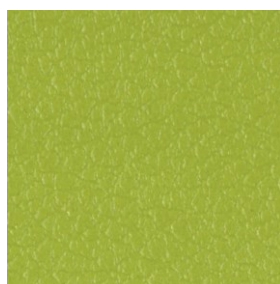


**Chocolat  
ACH**

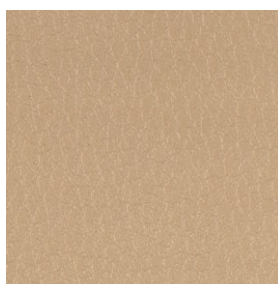


**Anthracite  
AAN**

## Les agrafés GINGKO M1



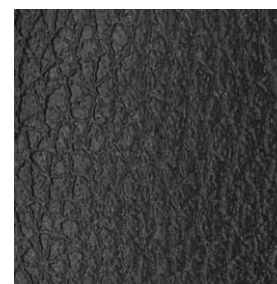
**Granny  
GGY**



**Dune  
GDU**



**Groseille  
GGR**



**Anthracite  
GAN**

# TEINTES EPOXY



**Blanc coton\***  
**BG**



**Muscade\***  
**MU**



**Marron brun givré\***  
**MG**



**Piment\***  
**PI**



**Gris argile\***  
**GA**



**Gris argent**  
**GT**



**Anthracite janvier\***  
**AJ**



**Gris martelé**  
**GM**



**Vert granny**  
**VY**



**Miel\***  
**MI**



**Orange ral 2004\***  
**OR**



**Cactus\***  
**CT**



**Bleu acapulco\***  
**BO**



**Violet purple**  
**VP**



**Réglisse\***  
**RE**

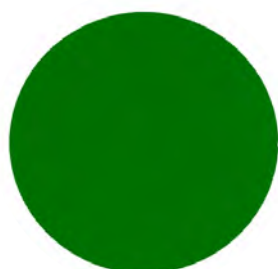


**Carbone\***  
**CA**



**Noir ral 9005\***  
**NR**

# TEINTES EPOXY



**Vert ral 6029\***  
**VE**



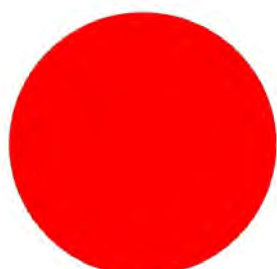
**Bleu turquoise ral 5018**  
**VU**



**Bleu ciel ral 5015**  
**BI**



**Rouge ral 3000**  
**RG**



**Rouge ral 3020**  
**RE**



**Jaune ral 1023**  
**JA**

\*Qualité polyester Architecture, ALESTA Ap  
Grâce à leurs excellentes performances  
mécaniques ces peintures peuvent être utilisées  
sur supports métalliques pour architecture  
intérieure ou extérieure